



**NORTH
POINT**
CABINETS®

Vanity Cabinets
2021



Maui Pebble Grey Cabinets
VSB27 (2), VDB15-3 (4) & KD30

The NorthPoint Cabinetry Advantage

Made in North America, NorthPoint Cabinetry features a wide array of QuickBuild™ cabinet designs, providing value with a quality, custom look. Cabinets are in-stock, shipping quickly from our strategically located warehouses across the U.S.

- Unique dovetail and pocket screw cabinet construction for sturdy and fast assembly
- Robust replacement parts program
- Free freight on most orders
- Dedicated customer service support



In Stock and Ships to Dealers Quickly!

With 3 dedicated warehouses across the country, NorthPoint Cabinetry products typically ship within 48 hours and arrive in 2-3 business days.



For more information, visit NorthPointCabinetry.com or scan the QR code.

Our Collections

PREMIER Collection

The Premier Collection features elegant upgrades like soft-close doors and drawers.

Door Styles: Catalina, Maui

- 3/4" Solid Wood Face Frame
- 1/2" Plywood Cabinet Construction
- Premium 100% Water-based Finishes
- Beautiful, finished interior
- 5/8" solid wood dovetail drawer boxes
- 3/4" thick veneered plywood shelves
- 5-year Limited Warranty

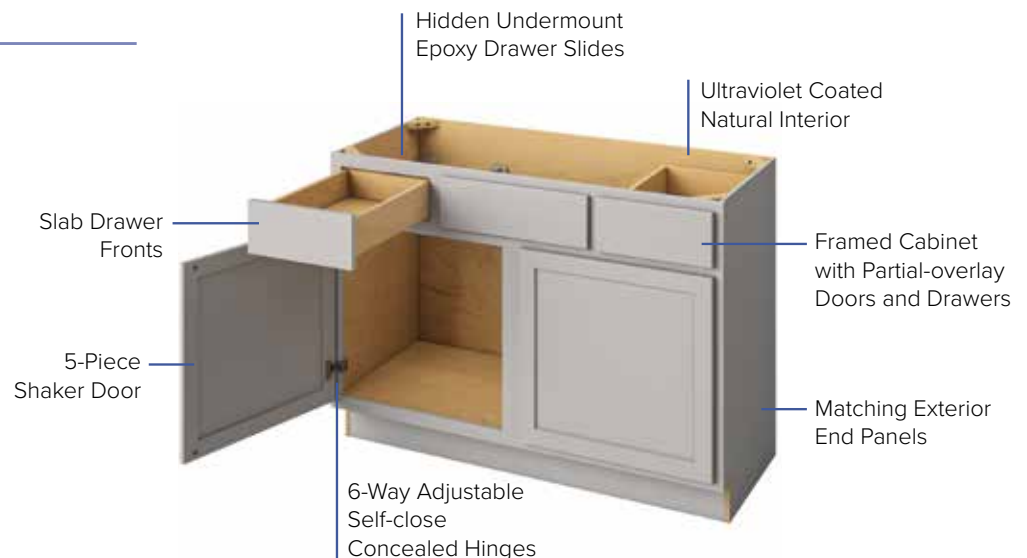


ESSENTIALS Collection

The Essentials Collection delivers on style at an impressive value.

Door Style: Hatteras

- 3/4" Solid Wood Face Frame
- 1/2" Plywood Cabinet Construction
- Premium 100% Water-based Finishes
- Beautiful, finished interior
- 5/8" solid wood dovetail drawer boxes
- 3/4" thick veneered plywood shelves
- 1-year Limited Warranty



Quality Comes First

Cabinets should withstand the demands of daily use and maintain their integrity throughout their lifetime. That's why when we designed NorthPoint Cabinetry we paid attention to all the details from start to finish. Each cabinet is just as functional on the inside as it is beautiful on the outside.



It Starts with Quality Wood

Just as a healthy tree needs strong roots to thrive, so too does a quality cabinet require premium lumber at its core. Our cabinets feature solid wood construction, so the quality of wood is of utmost importance.

Structural Integrity

Meaningful yet hidden reinforcements, like solid wood corner blocks and strategically placed hidden pocket screws, help reinforce the structural integrity of the cabinet. Take comfort that these well-constructed cabinets will stand the test of time.



Thoughtful Craftsmanship

Boasting an innovative dovetail and hidden pocket screw construction, these cleverly designed cabinets result in robust quality and quick, accurate assembly.



Pretty on the Inside Too

NorthPoint Cabinetry features a clean and beautifully finished birch interior that enhances the cabinet's luxurious, high-quality appeal.

Premium Drawer Boxes

Dovetail joinery is the hallmark of high-quality drawer boxes. The finished interior of the drawer boxes coupled with the dovetail construction and silky-smooth concealed slides make this drawer box the star of the show.



Hardworking Hardware

Our cabinets feature discreet compact hinges and concealed undermount slides. The hinges & slides have been 3rd party tested and exceed industry standards. The Premier collection (shown) features full extension slides so that you can easily access and make use of the whole drawer.

Expert Finishing

Our state-of-the-art manufacturing facility utilizes a multi-step professional finishing process which guarantees that finishes maintain a high degree of color and application accuracy from cabinet to cabinet.



PREMIER COLLECTION: CATALINA



Catalina Slate Cabinets
VSB24 (2) & VDB18-3

CATALINA FINISHES



POLAR WHITE
(PAINTED)



PEBBLE GREY
(PAINTED)



ESPRESSO
(STAINED)



SLATE
(STAINED)

Coming Summer 2021



PREMIER COLLECTION: MAUI



Maui Espresso Cabinets
VL1884 & VCDB60-6

MAUI FINISHES



POLAR WHITE
(PAINTED)



PEBBLE GREY
(PAINTED)



ESPRESSO
(STAINED)



SLATE
(STAINED)

Coming Summer 2021



ESSENTIALS COLLECTION: HATTERAS



Hatteras Polar White Cabinets
VSB48

HATTERAS FINISHES



POLAR WHITE
(PAINTED)



PEBBLE GREY
(PAINTED)



ESPRESSO
(STAINED)





Maui Pebble Grey Cabinets
VSB24 & VDB12-3



Maui Polar White Cabinets
VSB24

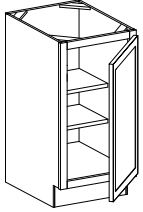


Catalina Espresso Cabinets
VDB18-3-CES (2) VSB27-CES (2) & DB30-3-CES

Cabinet Options for Vanities

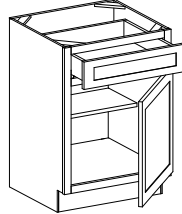
21" deep, 34-1/2" high except where noted.

42" and 48" widths will have a center stile unless otherwise noted.



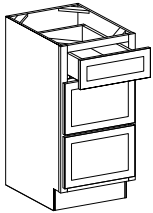
Full Height

SKU	W	H	D	# of Doors
VFH12	12"	34-1/2"	21"	1



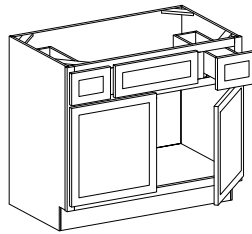
Single Door and Drawer

SKU	W	H	D	# of Doors	# of Drawers
VB12	12"	34-1/2"	21"	1	1
VB15	15"	34-1/2"	21"	1	1
VB18	18"	34-1/2"	21"	1	1



Three Drawer

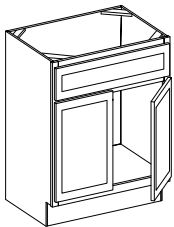
SKU	W	H	D	# of Drawers
VDB12-3	12"	34-1/2"	21"	3
VDB15-3	15"	34-1/2"	21"	3
VDB18-3	18"	34-1/2"	21"	3
VDB21-3	21"	34-1/2"	21"	3



Double Door & Double Drawer

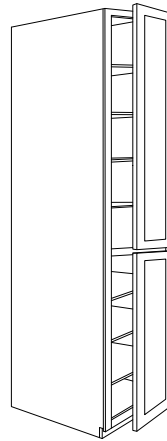
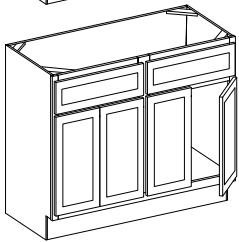
SKU	W	H	D	# of Doors	# of Drawers
VBTD36	36"	34-1/2"	21"	2	2
VBTD42*	42"	34-1/2"	21"	2	2
VBTD48*	48"	34-1/2"	21"	2	2

*42" and 48" wide cabinets have a center stile



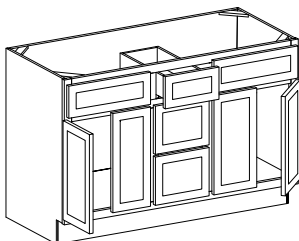
Sink Base

SKU	W	H	D	# of Doors
VS24	24"	34-1/2"	21"	2
VS27	27"	34-1/2"	21"	2
VS30	30"	34-1/2"	21"	2
VS33	33"	34-1/2"	21"	2
VS36	36"	34-1/2"	21"	2
VS42	42"	34-1/2"	21"	2
VS48	48"	34-1/2"	21"	4



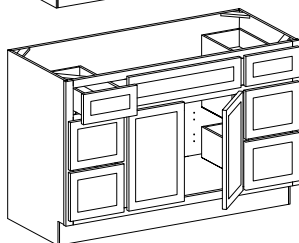
Linen

SKU	W	H	D	Shelves	# of Doors
VL1584	15"	84"	21"	6	2
VL1884	18"	84"	21"	6	2
VL2484	24"	84"	21"	6	4



Combo

SKU	W	H	D	# of Doors	# of Drawers
VCDB60-3	60"	34-1/2"	21"	4	3
VCDB60-6	60"	34-1/2"	21"	2	6



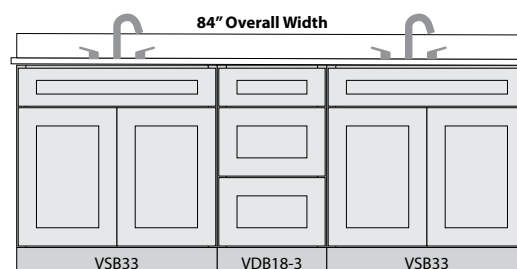
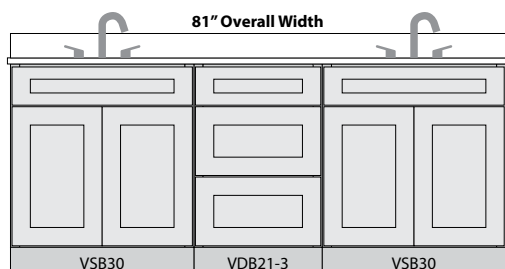
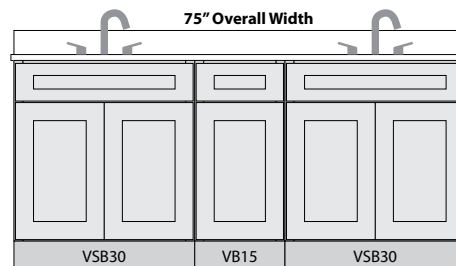
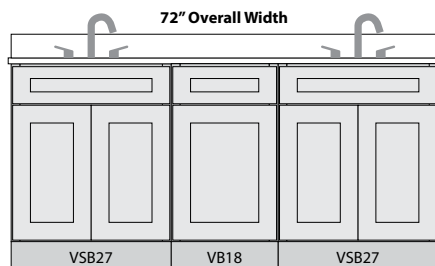
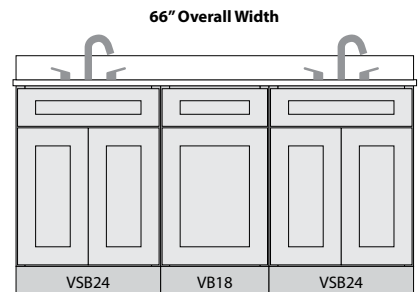
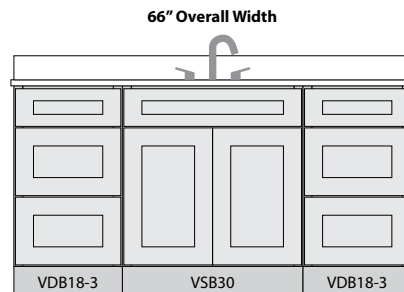
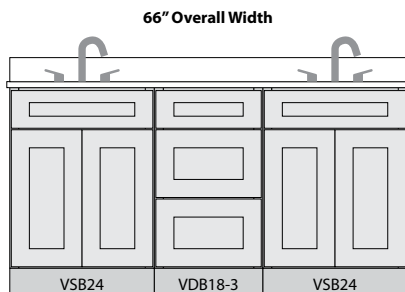
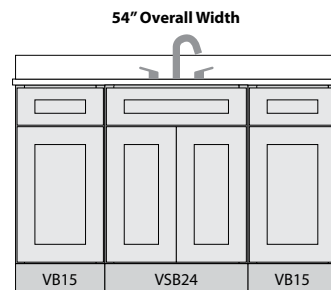
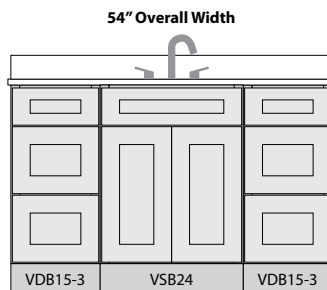
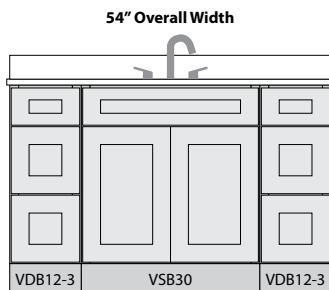
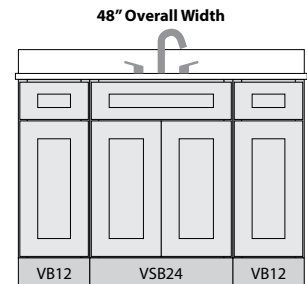
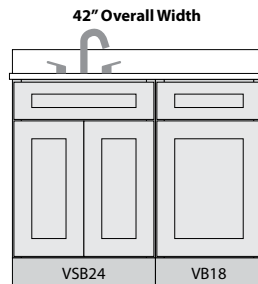
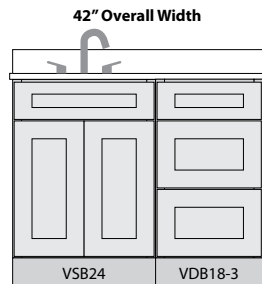
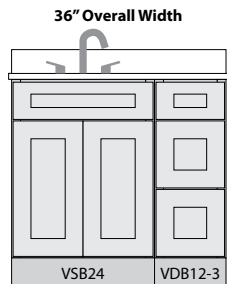
Knee Drawer



SKU	W	H	D
KD30	30"	6-11/16"	21"

Create Your Perfect Vanity

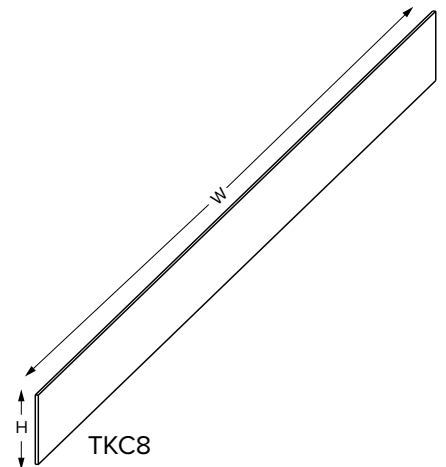
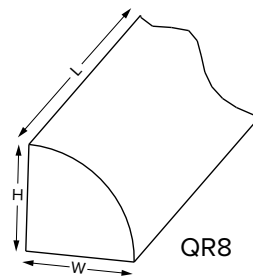
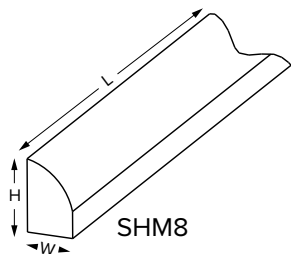
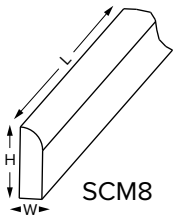
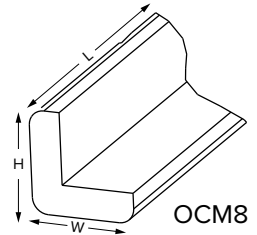
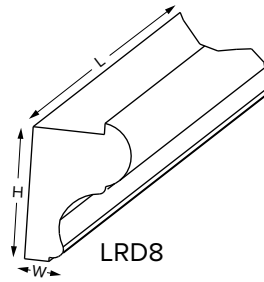
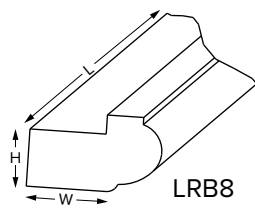
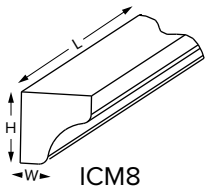
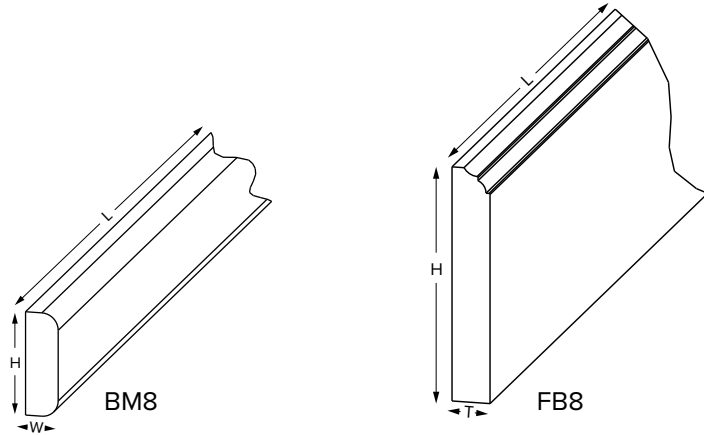
Our cabinets are designed to mix and match for a customized solution to fit your lifestyle. Need more drawers? No problem. Prefer one sink and lots of counter space? We've got you covered. Here are some popular combinations to get you started designing your perfect vanity.



Personalize Your Space - Moulding

Add the finishing touch to your cabinets with our broad selection of finished mouldings. We offer many different types of decorative and utility mouldings in all finishes to accentuate and complete the space.

SKU	Description	H	W	L
BM8	Batten	3/4"	1/4"	96"
FB8	Furniture Base	3/4"	4-5/8"	96"
ICM8	Inside Corner	3/4"	3/4"	96"
LRB8	Light Rail	13/16"	1-3/8"	96"
LRD8	Light Rail	1-1/2"	1"	96"
OCM8	Outside Corner	13/16"	13/16"	96"
QR8	Quarter Round	3/4"	3/4"	96"
SCM8	Scribe	3/4"	1/4"	96"
SHM8	Shoe	3/4"	1/2"	96"
TKC8	Toe Kick	1/4"	4-1/2"	96"



Personalize Your Space - Design Elements

We offer a variety of fluted and standard overlay fillers, end panels, and bun feet to help complete the cabinets with style. Create smooth transitions in cabinet layouts with fillers. Use end panels and bun feet to add character and a finishing touch to your design.



BUN & TAPERED FEET

Available in all finishes:
Polar White, Pebble Grey,
Espresso & Slate



FILLERS

Available in all finishes:
Polar White, Pebble Grey,
Espresso & Slate



Organize the Bathroom

An organized bathroom is just as important as an organized kitchen. Getting ready for the day in an organized bathroom helps to eliminate stress and save time. These organizers will help transform any bathroom into your dream spa oasis.



1 *Powered Vanity Drawer (PVGDI5-SC)*

Convert a vanity drawer into a hair styling workstation with our Powered Vanity Drawer. This dovetail drawer is equipped with a powered two-plug receptacle where hair appliances can stay plugged in and ready to go when they are needed.

Fits in 15" wide drawers (VB18-3 only)

2 *Towel Rack (OTDTHSS-R)*

Add a designated spot to hold hand towels hidden away in the cabinet with a door mountable towel rack. Tiered design allows for free air movement to help dry damp towels.

Fits in 18" wide cabinets or larger

3 *Rollout Drawers (ROXX)*

Add convenience of a drawer to any cabinet with our soft-close rollouts. Beautiful solid wood birch rollouts match cabinet interiors. Rollout drawers can be added to cabinet bottom and/or cabinet shelf.

Available to fit 15" – 36" wide cabinets



Catalina Polar White Cabinets

Decorative Cabinet Hardware: Tahoe Collection in Matte Black

4 *Door Mounted Rack (SPRXX)*

A door mounted rack in a bathroom vanity can keep bottles of beauty products and cans of spray tidy.

Fits in 15" – 21" wide cabinets

5 *"No Wiggle" Vanity Pullout (VBPO8-SC)*

Customize your bathroom storage with a vanity pullout featuring premium soft-close undermount slides. The unit's shortened height and depth is designed to fit into bathroom vanity cabinets. A modular design allows for the addition of an optional grooming organizer or acrylic tray divider.

Fits in 12" wide vanity cabinets, requires a full height vanity base cabinet if using optional grooming insert



For more information
on cabinet organizers,
scan the QR code or visit
<https://delivr.com/272ju>

Knobs & Pulls

JEFFREY ALEXANDER®
by Hardware Resources

E L E M E N T S®
by Hardware Resources

Add the perfect finishing touch to your NorthPoint Cabinetry with Jeffrey Alexander and Elements cabinet knobs and pulls! **There are over 100 different knobs and pulls to choose from** in various sizes, styles, and price points for you to achieve that perfect look..



For more information on Knobs & Pulls, scan the QR code or visit <https://delivr.com/2fk7w>

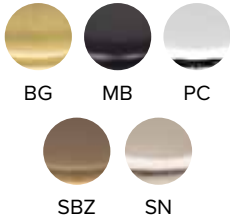


Popular Collections



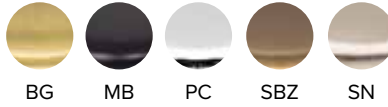
Naples Collection

96 mm pull (156xx)
1-9/16" T-knob (40xx)



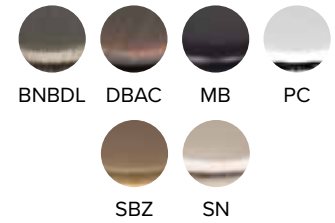
Stanton & Madison Collections

96 mm pull (625-96xx)
1-3/16" knob (3910xx)



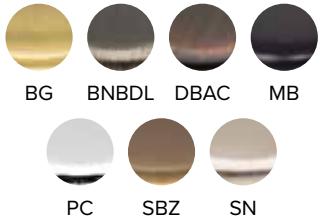
Florence Collection

3" CC cup pull (2981xx)
1-1/4" knob (2980xx)



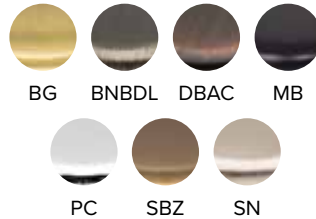
Thatcher Collection

96 mm pull (859-96xx)
1-1/2" T-knob (859T-xx)



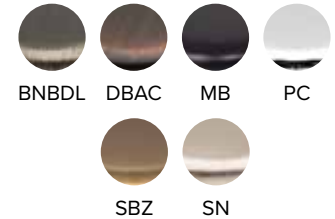
Hadly Collection

96 mm pull (449-96xx)
1" knob (449xx)



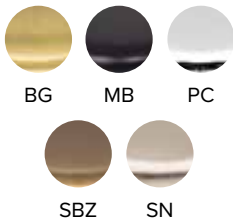
Belcastel Collection

96 mm pull (MO6373xx)
1-3/8" knob (MO6303xx)



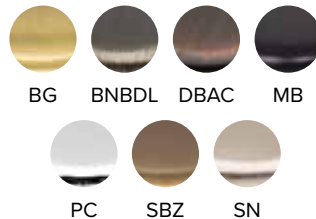
Hayworth Collection

96 mm pull (885-96xx)
1-1/8" knob (885xx)
2" T-knob (885L-xx)



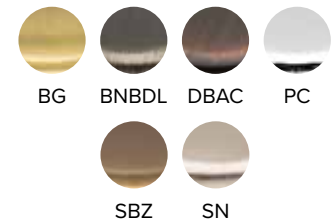
Dominique Collection

96 mm pull (845-96xx)
1-1/8" knob (845xx)
2" T-knob (845T-xx)



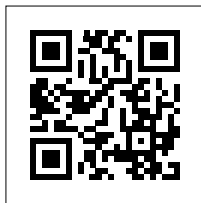
Tiffany Collection

96 mm pull (658-96xx)
1-1/4" knob (658xx)

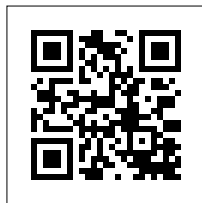


Assembly Instructions & Videos

Use the QR codes and links below to access step-by-step assembly videos



Base Cabinets
<https://delivr.com/2s43x>



Utility/Pantry Cabinets
<https://delivr.com/29fgn>



3-Drawer Base Cabinets
<https://delivr.com/2e6x8>

Pick up your vanity cabinet, take it home & assemble in minutes.

Base and Vanity Cabinet Assembly Instructions

Full height, single door one drawer, two door one drawer, two door double drawer, drawer base two drawers, drawer base three drawer, microwave base, blind corner base, sink and farm sink base.

Instrucciones para Armarlos Base y Montaje de Vanidad De altura completa, puerta unico un cajon, doble puerta un cajon, doble puerta doble cajon, cajon base doble puerta, cajon base triple cajon, base de microondas, base de tres cajones, fregadero y base del fregadero

IMPORTANT; Importante:
 Before you begin, make sure you familiarize yourself with all the parts and fully read the instructions.
Antes de comenzar, asegurese de familiarizarse con todos las piezas y leer atentamente las instrucciones.

CUSTOMER SERVICE: Servicio al Cliente:
 Customer Help line available weekdays between 7:00am and 6:00pm Central Time at 800-463-0660.
Línea de ayuda al cliente disponible los días de semana de 7:00am a 6:00pm Tiempo Central a 800-463-0660.

TOOLS NECESSARY; Herramientas necesarias:
 Screwdriver or screw gun with 6"- #2 Phillips bit drive and rubber mallet.
Destornillador o pistola de tornillo con 6"- #2 Phillips de controlador y mazo de goma. Pegamento es opcional para juntas del machihembras, pero no es necesario.

NOTE: The bottom of each of the parts is identified by the horizontal dado (groove) that is cut into each piece.
NOTE: La parte inferior de cada una de las piezas esta identificada por el dado horizontal (ranura) que esta cortada en cada pieza

Scan to watch the assembly video
<http://delivr.com/2s43x>

PARTS IDENTIFICATION: Identificación de partes

PART	DESCRIPTION	QTY
A	Door Face Frame Unit <small>Puertas/ unidad de Marco de la cara</small>	1
B	Slide Panel <small>Panel de lateral</small>	2
C	Bottom Panel <small>Panel inferior</small>	1
D	Back Panel <small>Panel posterior</small>	1
E	Door Back Panel <small>Panel de puerta del par</small>	1
F	Bottom Support Panel <small>Panel de soporte inferior</small>	1
G	Drawer Kit (One Kit per Drawer) <small>Kit de cajon (un kit por cajon)</small>	1
H	5/8" Drawer Front (Front Attached) <small>5/8" Frente de cajon (Frente adjunto)</small>	1
I	5/8" Drawer Side <small>5/8" Lado del cajon</small>	2
J	5/8" Drawer Back <small>5/8" Parte posterior del cajon</small>	1
K	3/4" Drawer Bottom <small>3/4" Capa inferior</small>	1
L	3/4" Thick Shelf (if applicable) <small>Elemento de apoyo (si corresponde)</small>	1
M	1/2" x 1 1/2" Flat Head Phillips Wood Screw <small>1/2" x 1 1/2" Tornillo de cabeza Phillips de cabeza plana de madera</small>	20
N	1/2" x 1 1/8" Hex Head Pocket Screw <small>1/2" x 1 1/8" Tornillo de cabeza Phillips de cabeza plana</small>	12
O	Wooden Corner Block <small>Bloque de madera de esquina</small>	4
P	5/8" x 1 3/8" Metal L-Bracket <small>5/8" x 1 3/8" Soporte de metal</small>	5
Q	5 mm Shelf Pin <small>5 mm pin de estante</small>	4
R	Clear Door Bumper <small>Pantochas/disco de puerta</small>	2-8
Slide Hardware Kit (One Kit per Drawer) <small>Kit de hardware de cajon (una por cajon)</small>		
	- Pair of Undermount Drawer Slides <small>Par de deslizamiento cajones inferiores</small>	1
	- Pair of Drawer Slide Clips <small>Par de clip de cajon</small>	1
	- Pair of Rear Slide Brackets <small>Par de soporte trasero de cajon</small>	1
	- 16 x 5/8" Hex Head Phillips Wood Screws <small>16 x 5/8" Tornillo de cabeza Phillips de cabeza plana de madera</small>	16

- Flat packed for ease of transportation; you won't need a truck to get your cabinet from the store to your home.
- QuickBuild™ for fast and easy assembly – all you need is a screwdriver; no power tools required!
- Detailed assembly instructions are included with every cabinet.

Ordering Made Easy

NorthPoint Cabinetry offers 3 convenient methods for easy order placement. We recommend placing orders online for faster processing and delivery, and to easily confirm products are in stock.

1. Online: www.NorthPointCabinetry.com
2. Email: Orders@NorthPointCabinetry.com
3. Fax: (318) 742-9513

Order Placement

Place your online order by visiting www.NorthPointCabinetry.com. Login, select the items you wish to order, and simply checkout.

To order by email or fax, obtain a cabinet order form by logging in to the website, or request a form from a Customer Service team member or your Sales Representative. Submit the completed order form to the email address or fax number listed above. 2020 and ProKitchen material lists are also accepted as long as NorthPoint Cabinetry's item number nomenclature is used.

For questions about your order, call (800) 463-0660. Our friendly customer service agents are available to help you from 7am until 6pm Central Time.

Warranty

Premier Collection

Hardware Resources warrants to the original consumer purchaser that our Premier Cabinetry will be free from unnatural defects in material and workmanship under normal use and proper care for the period of FIVE (5) YEARS from the date of original purchase. This Limited Warranty applies only to the Original Purchaser and is not transferable to any other party.

WARRANTY COVERAGE

Limited 5-Year Warranty on Cabinets to the original purchasing consumer from the date of original purchase that the cabinets will be free from defects in material and workmanship under normal use and proper care. Limited Lifetime Warranty on Drawer Slides and Hinges to the original purchasing consumer as long as they own the product. We warrant that the drawer slides and hinges shall be free from defects in material and workmanship under normal use.

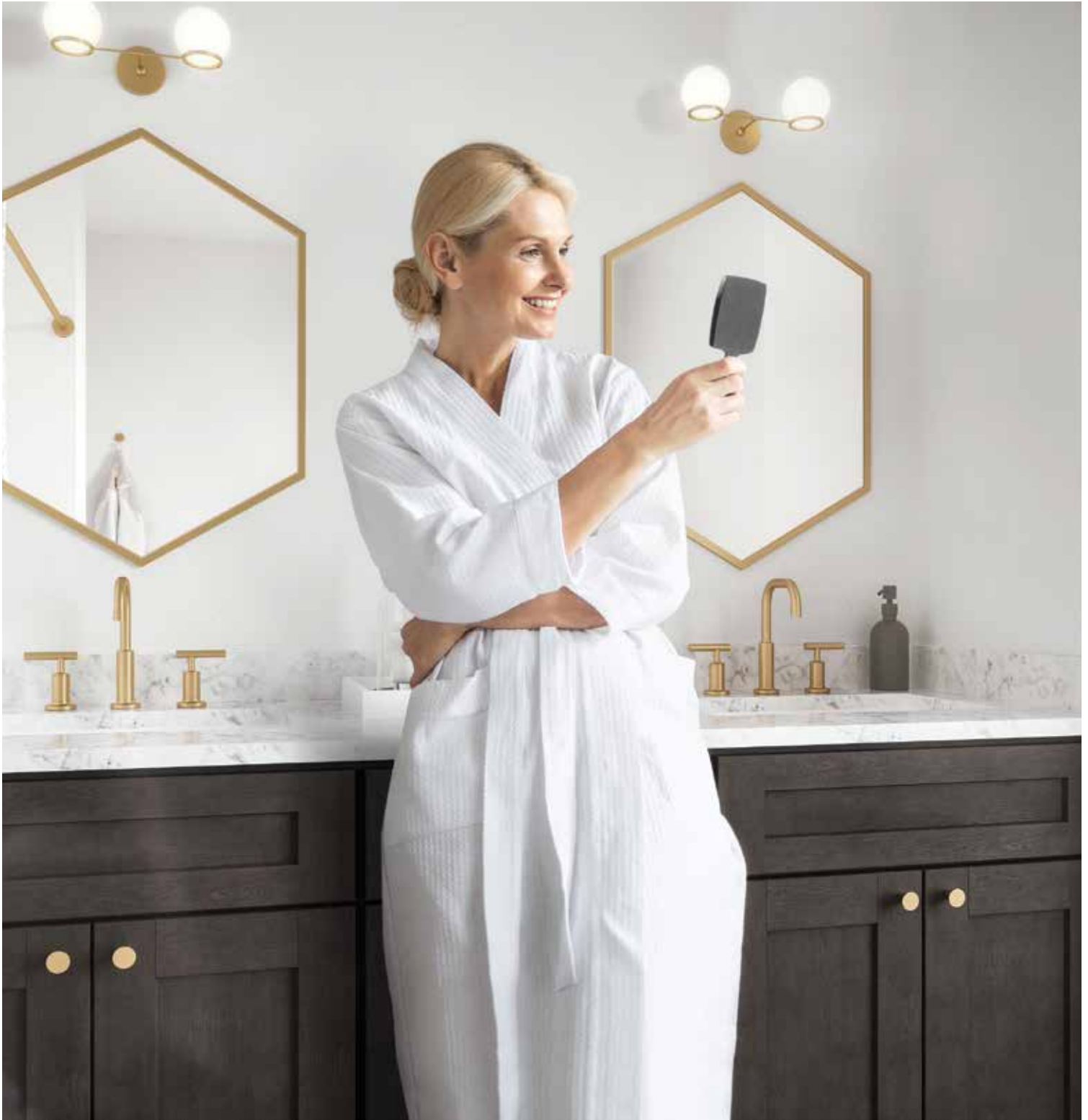
Essentials Collection

Hardware Resources warrants to the original consumer purchaser that our Essentials Cabinetry will be free from unnatural defects in material and workmanship under normal use and proper care for the period of ONE (1) YEAR from the date of original purchase. This Limited Warranty applies only to the Original Purchaser and is not transferable to any other party.

WARRANTY COVERAGE

Limited 1-Year Warranty on Cabinets and on Drawer Slides to the original purchasing consumer from the date of original purchase that the cabinets will be free from defects in material and workmanship under normal use and proper care. Limited Lifetime Warranty on Hinges to the original purchasing consumer as long as they own the product. We warrant that the drawer slides and hinges shall be free from defects in material and workmanship under normal use.

Elegance for the Bath



**NORTH
POINT**
CABINETS®

hardware
resources®



To learn more about the quality accessories we offer or other products we manufacture visit www.NorthPointCabinetry.com, call 1-800-463-0660 or scan the QR code with your smartphone or mobile device.